

Achievement First

ILUMINAR SCHOOL ADDITION

ADDRESS: 85 GARFIELD AVE, CRANSTON, RI 02920

PROJECT NUMBER: 21012.02



PROPOSED GYM ADDITION



PROPOSED NEW MAIN ENTRY/DROP OFF



VOLUME 1 OF 1

ABBRIDGED ARCHITECTURAL DRAWINGS (DPR REVIEW)

2/7/2023

KAESTLE BOOS ASSOCIATES, INC. KAESTLE BOOS associates, inc ARCHITECTURAL, INTERIORS & LANDSCAPE

PARISEAULT BUILDERS PARISEAULT BUILDERS CONSTRUCTION MANAGEMENT

B+AC, LLC ● ● STRUCTURAL ENGINEER

AKAL ENGINEERING, INC. ● ● MECHANICAL, PLUMBING & FIRE PROTECTION ENGINEER

ELECTRICAL SYSTEMS ENGINEERING, INC. ● ● ELECTRICAL ENGINEER

GOOD HARBOR TECHMARK, LLC ● ● SECURITY CONSULTANT

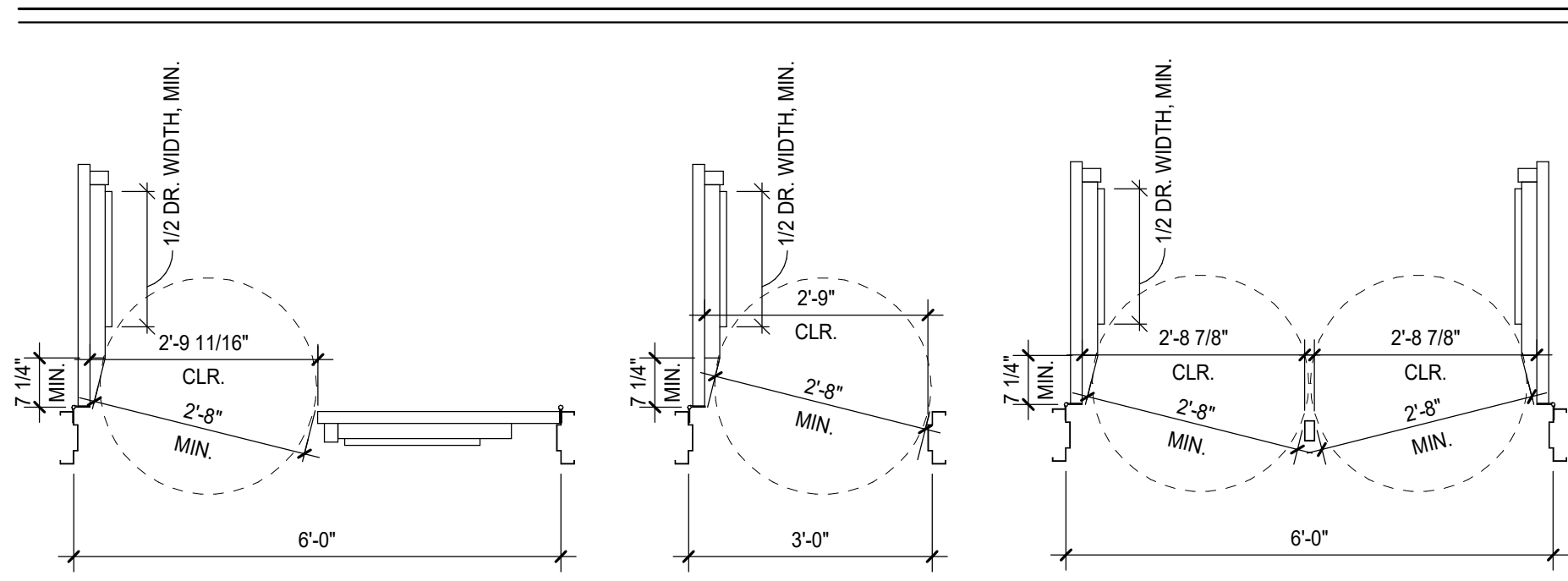
P.H.HAWLEY ASSOCIATES, LLC ● ● HARDWARE CONSULTANT

GREEN INTERNATIONAL AFFILIATES, INC. ● ● CIVIL ENGINEER

DRAWING LIST:

-	ARCHITECTURAL COVER SHEET
R1.00	CODE REFERENCE SHEET
R1.01	CODE PLAN BASEMENT & FIRST LEVEL
R1.02	CODE PLAN SECOND & THIRD LEVEL
A5.01	EXTERIOR ELEVATIONS EAST AND SOUTH
A5.02	EXTERIOR ELEVATIONS NORTH AND WEST
A13.01	ADDITION - MAIN LEVEL FURNITURE PLAN
A13.02	ADDITION - SECOND LEVEL FURNITURE PLAN

DOOR EGRESS WIDTH



KBA Egress Capacity Standard

DOOR SIZE		CLEAR WIDTH		USE GROUP	
feet-inches	inches	inches	inches	A, B, E, F, M, R, S, I1, I2, I3	H
				Sprinkler'd Buildings: NH State Building Code, MA (780 CMR 7th Ed.); RI State Building Code	
				Inches required per person	
				0.2	0.4
				0.15	
MAXIMUM OCCUPANT CAPACITY FOR EGRESS DOORS					
Door Size	Configuration	Area (sq. ft.)	Capacity	Area (sq. ft.)	Capacity
2'-10"	Single (existing only)	34	30.875	154	77
3'-0"	Single	36	32.875	164	82
3'-2"	Single	38	34.875	174	87
3'-4"	Single	40	36.875	184	92
3'-6"	Single	42	38.875	194	97
3'-8"	Single	44	40.875	204	102
3'-10"	Single	46	42.875	214	107
4'-0"	Single	48	44.875	224	112

MAXIMUM OCCUPANT CAPACITY FOR EGRESS DOORS					
Door Size	Configuration	Area (sq. ft.)	Capacity	Area (sq. ft.)	Capacity
2'-10"	Pair (existing only)	68	63.000	315	157
3'-0"	Pair	72	67.000	335	167
3'-2"	Pair	76	71.000	355	177
3'-4"	Pair	80	75.000	375	187
3'-6"	Pair	84	79.000	395	197
3'-8"	Pair	88	83.000	415	207
3'-10"	Pair	92	87.000	435	217
4'-0"	Pair	96	91.000	455	227

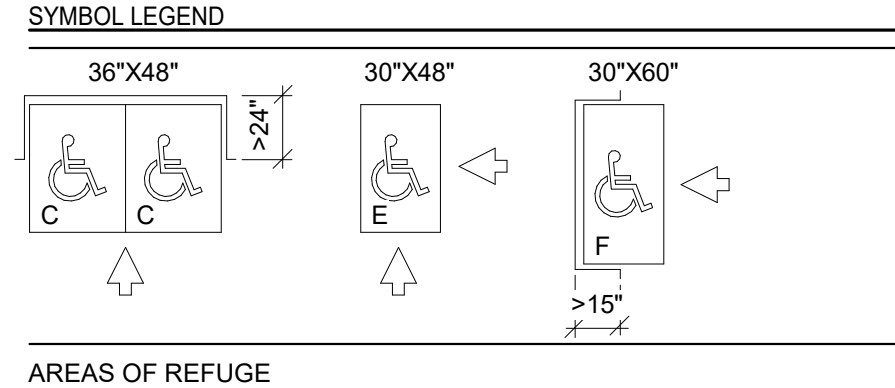
MAXIMUM OCCUPANT CAPACITY FOR EGRESS DOORS					
Door Size	Configuration	Area (sq. ft.)	Capacity	Area (sq. ft.)	Capacity
2'-10"	Pair with removable mullion (existing only)	68	61.500	307	153
3'-0"	Pair with removable mullion	72	65.500	327	163
3'-2"	Pair with removable mullion	76	69.500	347	173
3'-4"	Pair with removable mullion	80	73.500	367	183
3'-6"	Pair with removable mullion	84	77.500	387	193
3'-8"	Pair with removable mullion	88	81.500	407	203
3'-10"	Pair with removable mullion	92	85.500	427	213
4'-0"	Pair with removable mullion	96	89.500	447	223

* Actual Net Unobstructed clear width of the door opening in inches (subtract .625 inches for stop and 2.5 inches for door thickness and hinge.) At 34 inches and above, projections up to 4 inches, i.e. panic devices, are permitted.

** Actual Net Unobstructed clear width of the door opening in inches (subtract 2 times 2.5 inches for door thickness and hinge.) At 34 inches and above, projections up to 4 inches, i.e. panic devices, are permitted.

*** Actual Net Unobstructed clear width of the door opening in inches (subtract 2 times 2.5 inches for door thickness and hinge and 1.5 inches for removable mullion from door opening size.) At 34 inches and above, projections up to 4 inches are permitted.

HANDICAP NOTES



PLUMBING FIXTURES (NON-SIMULTANEOUS USE)

DESIGN OCCUPANT LOAD BASED ON OCCUPANCY			
BUSINESS (B)	ASSEMBLY (A) (ACCESSORY TO E)	EDUCATIONAL (E)	TOILET ROOMS INCLUDED IN PLUMBING COUNT:
MAIN OFFICE (MAIN LEVEL) 6P	CAFETERIA 230P (A-2)	EDUCATIONAL 1,111P	MALE: X105, X113, X117, X228, X327
GUIDANCE 10P	LIBRARY (2ND) 12P (A-3)	TOTAL 1,111P	FEMALE: Y104, Y109, Y118, Z04, X326
TEACHER PLANNING (2ND) 12P	LIBRARY (3RD) 17P (A-3)	(TOTAL DOES NOT INCLUDE KINDERGARTEN CLASSROOMS: X128, X130, & X132)	UNISEX: 112, X118A, 205, X223, X320, X328
TEACHER PLANNING (3RD) 7P	GYMNASIUM 947P (A-4)		
DEAN (3RD) 6P	TOTAL 1,206P		
MAIN OFFICE (THIRD LEVEL) 22P			
TOTAL 63P			

TOTAL DESIGN LOAD = 2,380 OCCUPANTS (1,190 GIRLS & 1,190 BOYS)

ACTUAL OCCUPANT LOAD
EDUCATIONAL PROJ. ENROLLMENT = xxx STUDENTS + xxx STAFF = xxx OCCUPANTS

TOTAL EXISTING FIXTURES				TOTAL FIXTURES AT COMPLETION OF PROJECT			
MEN	WOMEN	UNISEX		MEN	WOMEN	UNISEX	
WATER CLOSET	10	19	6	WATER CLOSET	13	19	6
LAVATORY	11	11	6	LAVATORY	14	13	6
URINAL	9	--	--	URINAL	9	--	--

USE OCCUPANCY	WATER CLOSETS				LAVATORIES				DRINKING FOUNTAINS	SERVICE SINK
	MALE	FEMALE	MALE	FEMALE	MALE	FEMALE	MALE	FEMALE		
ASSEMBLY A-2 230 115 MALE 115 FEMALE	1 PER 75	1.53	1 PER 75	1.53	1 PER 200	0.57	1 PER 200	0.57	1 PER 500	0.46
ASSEMBLY A-3 29 15 MALE 14 FEMALE	1 PER 125	0.12	1 PER 65	0.21	1 PER 200	0.07	1 PER 200	0.07	1 PER 500	0.05
ASSEMBLY A-4 947 474 MALE 473 FEMALE	1 PER 75	6.32	1 PER 40	11.82	1 PER 200	2.37	1 PER 150	3.15	1 PER 1,000	0.94
BUSINESS B 63 32 MALE 31 FEMALE	1ST 50: 1 PER 25 >50: 1 PER 50	1.28	1ST 50: 1 PER 25 >50: 1 PER 50	1.24	1ST 80: 1 PER 40 >80: 1 PER 80	0.80	1ST 80: 1 PER 40 >80: 1 PER 80	0.77	1 PER 100	0.63
EDUCATIONAL E 1,111 556 MALE 555 FEMALE	1 PER 50	11.12	1 PER 50	11.10	1 PER 50	11.12	1 PER 50	11.10	1 PER 100	11.11
SUBTOTALS	20.37		25.90		14.93		15.66		13.19	
REQUIRED TOTALS	21		26		15		16		14	
PROVIDED	25		22		14		13		3	

NOTE:
- IN PUBLIC MENS TOILETS AT LEAST 1 URINAL IS PROVIDED & URINALS ARE NOT SUBSTITUTED FOR MORE THAN 67% OF THE REQUIRED NUMBER OF WATER CLOSETS.
- REQUIRED H.C. TOILETS 1 PER TOILET ROOM. 1 + AN ADDITIONAL AMBULATORY-ACCESSIBLE COMPARTMENT IF 6 OR MORE.
- ALL DRINKING FOUNTAINS ARE ACCESSIBLE. MIN. OF 50% REQUIRED TO BE ACCESSIBLE, BUT NOT LESS THAN ONE ACCESSIBLE DRINKING FOUNTAIN IS PROVIDED ON EACH FLOOR

FACILITY INFORMATION

PROJECT NUMBER: 21000.00
BUILDING: ACHIEVEMENT FIRST - ILLUMINAR SCHOOL
LOCATION: 85 GARFIELD AVE.
DATE OF ORIGINAL CONSTRUCTION: 2003
DATES OF ADDITIONS: -

CODE INFORMATION - BUILDING #X

DATE OF ORIGINAL CONSTRUCTION: 2003
DATES OF ADDITIONS: -

1. GROUP CLASSIFICATION (Chapter 3)
(PRIMARY) E - EDUCATIONAL
(INCIDENTAL) ACCESSORY ASSEMBLY & STORAGE

2. CONSTRUCTION TYPE (Chapter 6)
MINIMUM TYPE REQUIRED: IIB
ACTUAL TYPE PROVIDED: (EXISTING) IIB
(NEW) IIB

3. BUILDING HEIGHT (Chapter 5)
ALLOWABLE HEIGHT 3 STORIES / 75 FEET
ACTUAL HEIGHT 3 STORIES / 45 FEET
STORIES ABOVE GRADE 3

4. BUILDING AREA (Chapter 5)
BUILDING AREA: (GROSS FLOOR) LOWER LEVEL MAIN SECOND THIRD LEVEL
EXIST. CONSTRUCTION (S.F.) 2,036 19,975 19,975 19,975
NEW CONSTRUCTION (S.F.) 0 12,757 2,933 0
TOTAL FLOOR AREA (S.F.) 2,036 32,732 22,908 19,975
TOTAL BUILDING AREA (S.F.) 77,651

5. AREA MODIFICATIONS TO TABLE 503
TOTAL PERIMETER = 146'-8" 404'-7" 397'-8" 133'-8"
OPEN PERIMETER = 146'-8" 404'-7" 397'-8" 133'-8"
TOTAL FRONTAGE (F) 1082'-7" PERIMETER (P) 1082'-7"

WIDTH OF OPEN SPACE (W) = 30
 $I_f = \frac{F}{100} \left(\frac{F}{P} - 0.25 \right) \frac{W}{30}$
% FRONTAGE INCREASE (I_f) = 75

6. CASE 1 - SINGLE OCCUPANCY, SINGLE STORY (506.2.1)
 $A_a = [A] + (NS \times I_f) \times S_a$

a) MULTISTORY ALLOWABLE
 $A_a = 143,000 + (14,500 \times .75) \times 3$
 $A_a = 163,125$
163,125 sf > 61,961 sf (PASS)

b) SINGLE STORY ALLOWABLE
 $A_a = 143,000 + (14,500 \times .75) \times 1$
 $A_a = 54,375$
54,375 sf > 32,732 sf (PASS)

7. CASE 2 - MIXED OCCUPANCY SEPARATED USES (302.3.2) - NOT USED

8. FIRE-RESISTANCE RATED REQUIREMENTS FOR BUILDING ELEMENTS (Table 601)

1. STRUCTURAL FRAME (INCLUDING COLUMNS, GIRDERS, TRUSSES)	0	HR(S)
2. BEARING WALLS:	0	HR(S)
3. NONBEARING WALLS AND PARTITIONS	0	HR(S)
4. NONBEARING WALLS AND PARTITIONS	0	HR(S)
5. FLOOR CONSTRUCTION (INCLUDING SUPPORTING BEAMS AND JOISTS)	0	HR(S)
6. ROOF CONSTRUCTION (INCLUDING SUPPORTING BEAMS AND JOISTS)	0	HR(S)

9. OCCUPANCY LOAD (REFER TO CODE PLAN)

DESIGN TOTAL FOR EACH FLOOR (list all floors)

LOWER LEVEL	6
MAIN LEVEL	1,441
SECOND LEVEL	514
THIRD LEVEL	518

EXIT CAPACITY FOR EACH FLOOR (list all floors)

LOWER LEVEL	164
MAIN LEVEL	3,671
SECOND LEVEL	803
THIRD LEVEL	643

DESIGN TOTAL FOR FACILITY 2,473
TOTAL EXIT CAPACITY FOR FACILITY 5,117

10. MODIFICATIONS PROVIDE MODIFICATION NUMBER AND CODE SECTION NUMBER BEING MODIFIED.
(a) APPROVED
(b) PENDING
(c) EXISTING

11. ACCESSIBLE BUILDING X DESIGNATED
NON-DESIGNATED

12. MINIMUM PLUMBING FIXTURE COUNT (I.P.C. Chapter 4) for each type of occupancy in each separate building or entire facility.
(SEE PLUMBING FIXTURE TABLE THIS SHEET)

13. SPRINKLER PROTECTION X ENTIRE BUILDING
LIMITED AREA

14. CODES TO WHICH THIS PROJECT WAS DESIGNED:
- SBC-1 RHODE ISLAND STATE BUILDING CODE INCLUDING: 2015 INTERNATIONAL BUILDING CODE (IBC)
- SBC-3 RHODE ISLAND STATE PLUMBING CODE INCLUDING: 2015 INTERNATIONAL PLUMBING CODE
- SBC-4 RHODE ISLAND STATE MECHANICAL CODE INCLUDING: 2015 INTERNATIONAL MECHANICAL CODE
- SBC-5 RHODE ISLAND STATE ELECTRICAL CODE INCLUDING: 2015 INTERNATIONAL ELECTRICAL CODE
- SBC-8 RHODE ISLAND STATE ENERGY CONSERVATION CODE INCLUDING: 2015 INTERNATIONAL ENERGY CONSERVATION CODE
- RHODE ISLAND FIRE SAFETY CODE
- RHODE ISLAND GENERAL STATUTES
- CURRENT RHODE ISLAND PUBLIC HEALTH CODE
- CURRENT OCCUPATIONAL SAFETY AND HEALTH ADMINISTRATION (O.S.H.A.) - TITLE 29 LABOR
- THE AMERICANS WITH DISABILITIES ACT, TITLE II, INCLUDING THE 2010 ADA STANDARDS FOR ACCESSIBLE DESIGN
- 2009 ICC/ANSI A117.1 AMERICAN NATIONAL STANDARD, ACCESSIBLE AND USABLE BUILDINGS AND FACILITIES (ICC/ANSI) AS AMENDED BY RI

CODE PLAN NOTES FOR INTERIOR FINISHES

INTERIOR FINISHES (FOR A FULLY SPRINKLERED BUILDING) SHALL BE PROVIDED AND CONFIRMED TO HAVE THE FOLLOWING CLASSIFICATION RATINGS:

WALLS AND CEILING (OTHER THAN TEXTILE) BUSINESS AND EDUCATIONAL OCCUPANCIES:
- VERTICAL EXITS AND EXIT PASSAGEWAYS - CLASS B (CLASS C IF < 3 STORIES)
- EXIT ACCESS CORRIDORS AND OTHER EXIT WAYS - CLASS C
- ROOMS AND ENCLOSED SPACES - CLASS C
ASSEMBLY OCCUPANCIES:
- VERTICAL EXITS AND EXIT PASSAGEWAYS - CLASS B (CLASS C IF < 3 STORIES)
- EXIT ACCESS CORRIDORS AND OTHER EXIT WAYS - CLASS B
- ROOMS AND ENCLOSED SPACES - CLASS C

WALLS - TEXTILE CLASS A OR IBC 803.6.1.1 OR 803.6.1.2

CEILING - TEXTILE CLASS A

FLOOR FINISH OCCUPANCIES A, B, E, H, I-4, M, R-1, R-2, S
- DOC FF-1 (CPS 16 CFR, PART 1630)
OCCUPANCIES I-2, I-3
- VERTICAL EXITS, EXIT PASSAGEWAYS, AND EXIT ACCESS CORRIDORS - CLASS II
- OTHER AREAS - DOC FF-1 (CPS 16 CFR, PART 1630)

CODE PLAN NOTES FOR INTERIOR FINISHES

INTERIOR FINISHES (FOR A NON-SPRINKLERED BUILDING) SHALL BE PROVIDED AND CONFIRMED TO HAVE THE FOLLOWING CLASSIFICATION RATINGS:

WALLS AND CEILING (OTHER THAN TEXTILE) BUSINESS AND EDUCATIONAL OCCUPANCIES:
- VERTICAL EXITS AND EXIT PASSAGEWAYS - CLASS A
- EXIT ACCESS CORRIDORS AND OTHER EXIT WAYS - CLASS B
- ROOMS AND ENCLOSED SPACES - CLASS C
ASSEMBLY OCCUPANCIES A-1, A-2
- VERTICAL EXITS AND EXIT PASSAGEWAYS - CLASS A
- EXIT ACCESS CORRIDORS AND OTHER EXIT WAYS - CLASS A (LOBBIES CLASS B)
- ROOMS AND ENCLOSED SPACES - CLASS B (CLASS C IF < 300 PEOPLE)
ASSEMBLY OCCUPANCIES A-3, A-4, A-5
- VERTICAL EXITS AND EXIT PASSAGEWAYS - CLASS A
- EXIT ACCESS CORRIDORS AND OTHER EXIT WAYS - CLASS A
- ROOMS AND ENCLOSED SPACES - CLASS C

WALLS - TEXTILE IBC 803.6.1.1 OR 803.6.1.2

CEILING - TEXTILE CLASS A

FLOOR FINISH OCCUPANCIES A, B, E, H, I-4, M, R-1, R-2, S
- VERTICAL EXITS, EXIT PASSAGEWAYS, AND EXIT ACCESS CORRIDORS - CLASS II
- OTHER AREAS - DOC FF-1 (CPS 16 CFR, PART 1630)
OCCUPANCIES I-2, I-3
- VERTICAL EXITS, EXIT PASSAGEWAYS, AND EXIT ACCESS CORRIDORS - CLASS I
- OTHER AREAS - DOC FF-1 (CPS 16 CFR, PART 1630)

WALLS - TEXTILE IBC 803.6.1.1 OR 803.6.1.2

CEILING - TEXTILE CLASS A

FLOOR FINISH OCCUPANCIES A, B, E, H, I-4, M, R-1, R-2, S
- VERTICAL EXITS, EXIT PASSAGEWAYS, AND EXIT ACCESS CORRIDORS - CLASS II
- OTHER AREAS - DOC FF-1 (CPS 16 CFR, PART 1630)
OCCUPANCIES I-2, I-3
- VERTICAL EXITS, EXIT PASSAGEWAYS, AND EXIT ACCESS CORRIDORS - CLASS I
- OTHER AREAS - DOC FF-1 (CPS 16 CFR, PART 1630)

WALLS - TEXTILE IBC 803.6.1.1 OR 803.6.1.2

CEILING - TEXTILE CLASS A

FLOOR FINISH OCCUPANCIES A, B, E, H, I-4, M, R-1, R-2, S
- VERTICAL EXITS, EXIT PASSAGEWAYS, AND EXIT ACCESS CORRIDORS - CLASS II
- OTHER AREAS - DOC FF-1 (CPS 16 CFR, PART 1630)
OCCUPANCIES I-2, I-3
- VERTICAL EXITS, EXIT PASSAGEWAYS, AND EXIT ACCESS CORRIDORS - CLASS I
- OTHER AREAS - DOC FF-1 (CPS 16 CFR, PART 1630)

WALLS - TEXTILE IBC 803.6.1.1 OR 803.6.1.2

CEILING - TEXTILE CLASS A

FLOOR FINISH OCCUPANCIES A, B, E, H, I-4, M, R-1, R-2, S
- VERTICAL EXITS, EXIT PASSAGEWAYS, AND EXIT ACCESS CORRIDORS - CLASS II
- OTHER AREAS - DOC FF-1 (CPS 16 CFR, PART 1630)
OCCUPANCIES I-2, I-3
- VERTICAL EXITS, EXIT PASSAGEWAYS, AND EXIT ACCESS CORRIDORS - CLASS I
- OTHER AREAS - DOC FF-1 (CPS 16 CFR, PART 1630)

WALLS - TEXTILE IBC 803.6.1.1 OR 803.6.1.2

CEILING - TEXTILE CLASS A

FLOOR FINISH OCCUPANCIES A, B, E, H, I-4, M, R-1, R-2, S
- VERTICAL EXITS, EXIT PASSAGEWAYS, AND EXIT ACCESS CORRIDORS - CLASS II
- OTHER AREAS - DOC FF-1 (CPS 16 CFR, PART 1630)
OCCUPANCIES I-2, I-3
- VERTICAL EXITS, EXIT PASSAGEWAYS, AND EXIT ACCESS CORRIDORS - CLASS I
- OTHER AREAS - DOC FF-1 (CPS 16 CFR, PART 1630)

WALLS - TEXTILE IBC 803.6.1.1 OR 803.6.1.2

CEILING - TEXTILE CLASS A

FLOOR FINISH OCCUPANCIES A, B, E, H, I-4, M, R-1, R-2, S
- VERTICAL EXITS, EXIT PASSAGEWAYS, AND EXIT ACCESS CORRIDORS - CLASS II
- OTHER AREAS - DOC FF-1 (CPS 16 CFR, PART 1630)
OCCUPANCIES I-2, I-3
- VERTICAL EXITS, EXIT PASSAGEWAYS, AND EXIT ACCESS CORRIDORS - CLASS I
- OTHER AREAS - DOC FF-1 (CPS 16 CFR, PART 1630)

WALLS - TEXTILE IBC 803.6.1.1 OR 803.6.1.2

CEILING - TEXTILE CLASS A

FLOOR FINISH OCCUPANCIES A, B, E, H, I-4, M, R-1, R-2, S
- VERTICAL EXITS, EXIT PASSAGEWAYS, AND EXIT ACCESS CORRIDORS - CLASS II
- OTHER AREAS - DOC FF-1 (CPS 16 CFR, PART 1630)
OCCUPANCIES I-2, I-3
- VERTICAL EXITS, EXIT PASSAGEWAYS, AND EXIT ACCESS CORRIDORS - CLASS I
- OTHER AREAS - DOC FF-1 (CPS 16 CFR, PART 1630)

WALLS - TEXTILE IBC 803.6.1.1 OR 803.6.1.2

CEILING - TEXTILE CLASS A

FLOOR FINISH OCCUPANCIES A, B, E, H, I-4, M, R-1, R-2, S
- VERTICAL EXITS, EXIT PASSAGEWAYS, AND EXIT ACCESS CORRIDORS - CLASS II
- OTHER AREAS - DOC FF-1 (CPS 16 CFR, PART 1630)
OCCUPANCIES I-2, I-3
- VERTICAL EXITS, EXIT PASSAGEWAYS, AND EXIT ACCESS CORRIDORS - CLASS I
- OTHER AREAS - DOC FF-1 (CPS 16 CFR, PART 1630)

WALLS - TEXTILE IBC 803.6.1.1 OR 803.6.1.2

CEILING - TEXTILE CLASS A

FLOOR FINISH OCCUPANCIES A, B, E, H, I-4, M, R-1, R-2, S
- VERTICAL EXITS, EXIT PASSAGEWAYS, AND EXIT ACCESS CORRIDORS - CLASS II
- OTHER AREAS - DOC FF-1 (CPS 16 CFR, PART 1630)
OCCUPANCIES I-2, I-3
- VERTICAL EXITS, EXIT PASSAGEWAYS, AND EXIT ACCESS CORRIDORS - CLASS I
- OTHER AREAS - DOC FF-1 (CPS 16 CFR, PART 1630)

WALLS - TEXTILE IBC 803.6.1.1 OR 803.6.1.2

CEILING - TEXTILE CLASS A

FLOOR FINISH OCCUPANCIES A, B, E, H, I-4, M, R-1, R-2, S
- VERTICAL EXITS, EXIT PASSAGEWAYS, AND EXIT ACCESS CORRIDORS - CLASS II
- OTHER AREAS - DOC FF-1 (CPS 16 CFR, PART 1630)
OCCUPANCIES I-2, I-3
- VERTICAL EXITS, EXIT PASSAGEWAYS, AND EXIT ACCESS CORRIDORS - CLASS I
- OTHER AREAS - DOC FF-1 (CPS 16 CFR, PART 1630)

WALLS - TEXTILE IBC 803.6.1.1 OR 803.6.1.2

CEILING - TEXTILE CLASS A

FLOOR FINISH OCCUPANCIES A, B, E, H, I-4, M, R-1, R-2, S
- VERTICAL EXITS, EXIT PASSAGEWAYS, AND EXIT ACCESS CORRIDORS - CLASS II
- OTHER AREAS - DOC FF-1 (CPS 16 CFR, PART 1630)
OCCUPANCIES I-2, I-3
- VERTICAL EXITS, EXIT PASSAGEWAYS, AND EXIT ACCESS CORRIDORS - CLASS I
- OTHER AREAS - DOC FF-1 (CPS 16 CFR, PART 1630)

WALLS - TEXTILE IBC 803.6.1.1 OR 803.6.1.2

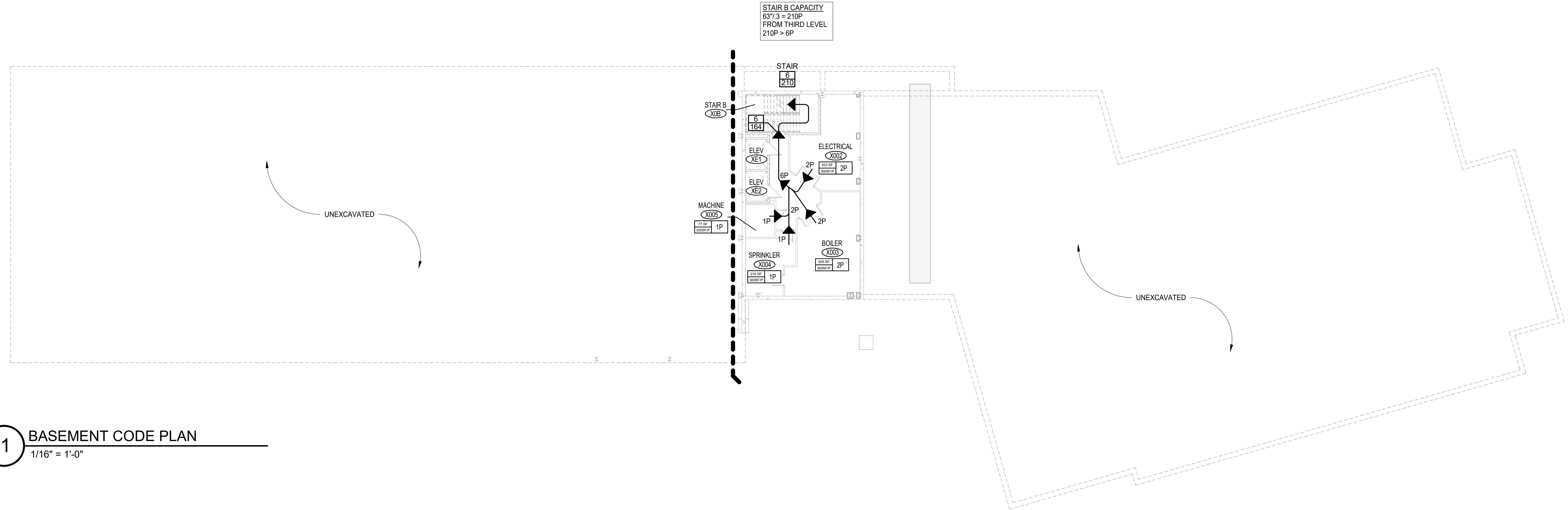
CEILING - TEXTILE CLASS A

FLOOR FINISH OCCUPANCIES A, B, E, H, I-4, M, R-1, R-2, S
- VERTICAL EXITS, EXIT PASSAGEWAYS, AND EXIT ACCESS CORRIDORS - CLASS II
- OTHER AREAS - DOC FF-1 (CPS 16 CFR, PART 1630)
OCCUPANCIES I-2, I-3
- VERTICAL EXITS, EXIT PASSAGEWAYS, AND EXIT ACCESS CORRIDORS - CLASS I
- OTHER AREAS - DOC FF-1 (CPS 16 CFR, PART 1630)

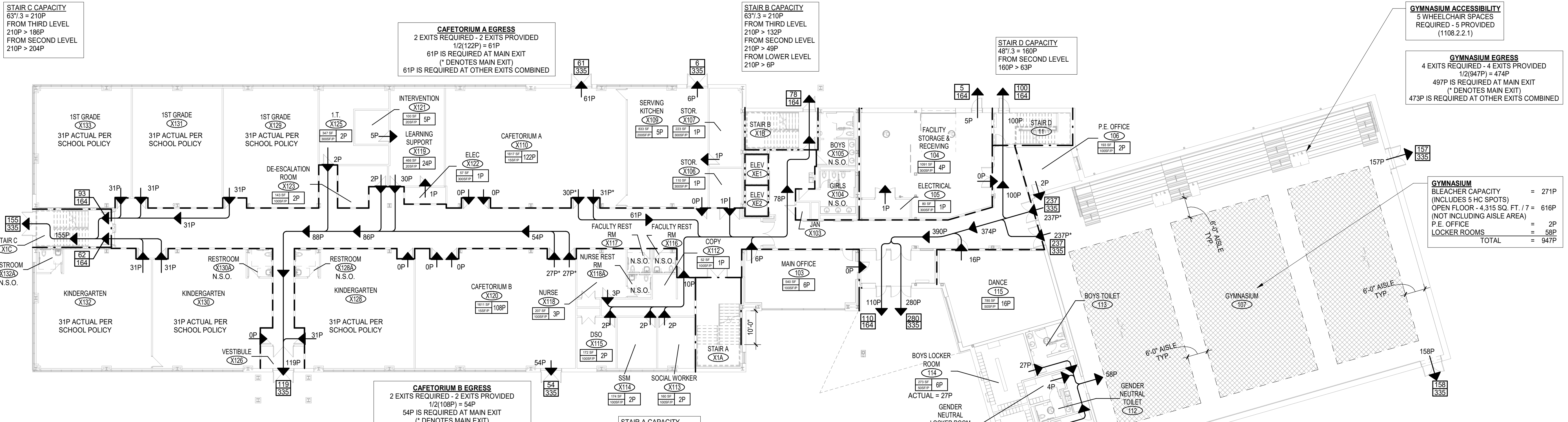
WALLS - TEXTILE IBC 803.6.1.1 OR 803.6.1.2

CEILING - TEXTILE CLASS A

FLOOR FINISH OCCUPANCIES A, B, E, H, I-4



1 BASEMENT CODE PLAN
1/16" = 1'-0"



2 MAIN LEVEL CODE PLAN
1/16" = 1'-0"

CODE PLAN LEGEND

EXIT CAPACITY

ACTUAL EGRESS OF DOOR OR STAIR
MAXIMUM ALLOWABLE EGRESS CAPACITY OF DOOR OR STAIR

ROOM NAME

ROOM NUMBER
MAXIMUM NUMBER OF ALLOWABLE OCCUPANTS
AREA IN NET SQUARE FEET (GROSS SQUARE FEET)
OCCUPANCY LOAD FACTOR

115' → PATH OF MAXIMUM TRAVEL DISTANCE TO EXIT
15' → DIRECTION OF TRAVEL TO EXIT

HANDICAPPED ACCESSIBLE AREA OR EXIT
A = 33' x 48' D = 36' x 60'
B = 33' x 60' E = 30' x 48'
C = 36' x 48' F = 30' x 30'

F.E. FIRE EXTINGUISHER
NSO NON - SIMULTANEOUS OCCUPANCY

SEPARATIONS ARE DESIGNATED AS FOLLOWS:

IMAGINARY LOT LINE
2 HOUR FIRE-RESISTANCE RATED FIRE BARRIER
1 HOUR FIRE-RESISTANCE RATED FIRE BARRIER
SMOKE RESISTANT SEPARATION

GENERAL NOTES

- FOR SPECIFIC WALL DESIGNATIONS AND RATED DESIGNS SEE R0.01 AND A1.00 SERIES.
- OCCUPANT LOAD AS ASSEMBLY (7 S.F./NET) UNLESS OTHERWISE NOTED REFER TO CODE PLAN.

CODE PLAN NOTES NEW & EXISTING CONSTRUCTION

A. ALL SPACES, FACILITIES AND PROGRAMS REQUIRED BY CODE TO BE ACCESSIBLE TO PHYSICALLY DISABLED PERSONS SHALL BE ACCESSIBLE. WHERE A WORKSTATION IS PROVIDED, AN ACCESSIBLE WORKSTATION IS REQUIRED. WHERE A SINK IS PROVIDED, AN ACCESSIBLE SINK WITH PIPE PROTECTION IS REQUIRED. ALL LABS AND SHOPS SHALL HAVE AN ACCESSIBLE EYE AND BODY WASH. ALL ACCESSORIES SHALL MEET REACH RANGES FOR FRONT OR SIDE APPROACH. ALL ACCESSIBLE ROUTES THROUGH BUILDING SHALL PROVIDE A MINIMUM 32 INCHES CLEARANCE (DOORWAYS IN REHABILITATION ACT 1973 INCLUDING UNIFORM FEDERAL ACCESSIBILITY STANDARDS (UFAS) AND 504 REGULATIONS, ICC/ANSI A117.1 - 2003, AND THE AMERICANS WITH DISABILITIES ACT, TITLE II, INCLUDING THE AMERICANS WITH DISABILITIES ACT ACCESSIBILITY GUIDELINES (ADAAG) AND ADA REGULATIONS. REFER TO R0.02 FOR MOUNTING HEIGHTS FOR ACCESSIBLE FIXTURES.

B. NEW AND EXISTING SMOKE PARTITIONS, INCLUDING STORAGE ROOMS OVER 100 SQUARE FEET, SHALL HAVE PENETRATIONS AND VOIDS FIRESTOPPED IN ACCORDANCE WITH DIVISION 07 SPECIFICATION SECTION "PENETRATION FIRESTOPPING". ALL HEAD-OF-WALL JOINTS AND FLOOR-TO-WALL JOINTS AT NEW AND EXISTING SMOKE RESISTANT PARTITIONS SHALL BE SEALED IN ACCORDANCE WITH DIVISION 07 SPECIFICATION SECTION "FIRE-RESISTIVE JOINT SYSTEMS". NEW AND EXISTING FIRE-RESISTANCE RATED WALLS SHALL HAVE PENETRATIONS AND VOIDS FIRESTOPPED IN ACCORDANCE WITH DIVISION 07 SPECIFICATION SECTION "FIRE-RESISTIVE JOINT SYSTEMS". ALL HEAD-OF-WALL JOINTS AND FLOOR-TO-WALL JOINTS AT NEW AND EXISTING FIRE-RATED WALLS SHALL BE SEALED IN ACCORDANCE WITH DIVISION 07 SPECIFICATION SECTION "FIRE-RESISTIVE JOINT SYSTEMS".

D. ALL PENETRATIONS THROUGH FLOORS, INCLUDING FLOOR OF DUCTWORK ENCLOSURES, SHALL BE FIRESTOPPED IN ACCORDANCE WITH DIVISION 07 SECTION "PENETRATION FIRESTOPPING". PENETRATIONS THROUGH FLOORS OF RATED ROOMS OR FLOOR SYSTEMS SHALL BE FIRESTOPPED TO MEET RATINGS OF ROOM OR FLOOR SYSTEM.

KAESTLE BOOS
associates, inc

16 Chestnut Street, Suite 301, Foxborough, MA 02035
Phone: 508-549-9906 • Fax: 508-549-9907

416 Slater Road, P.O. Box 2590, New Britain, CT 06050-2590
Phone: 860-229-0361 • Fax: 860-229-5303

Additional offices located in Massachusetts and Rhode Island
Email: kba@kba-architects.com • Web: www.kba-architects.com

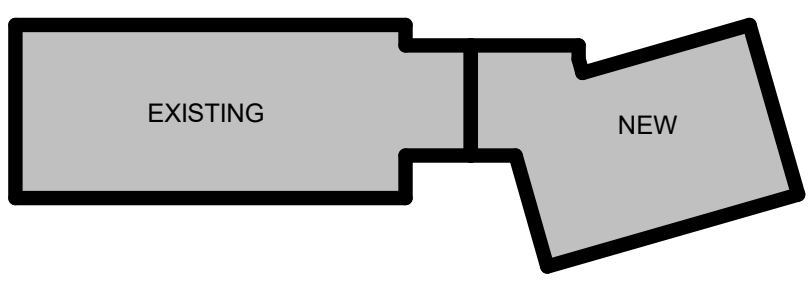
ISSUE DATE

DATE	DESCRIPTION
JUNE 13, 2022	ISSUED FOR BID

REVISIONS

DATE	DESCRIPTION
------	-------------

FOR ALL ABBREVIATIONS, SYMBOL LEGENDS, AND GENERAL NOTES SEE SHEET R0.01



KEY PLAN
SCALE: AS NOTED
PROJECT TRUE

**ACHIEVEMENT
FIRST ILUMINAR
SCHOOL ADDITION**

85 GARFIELD AVE,
CRANSTON, RI 02920

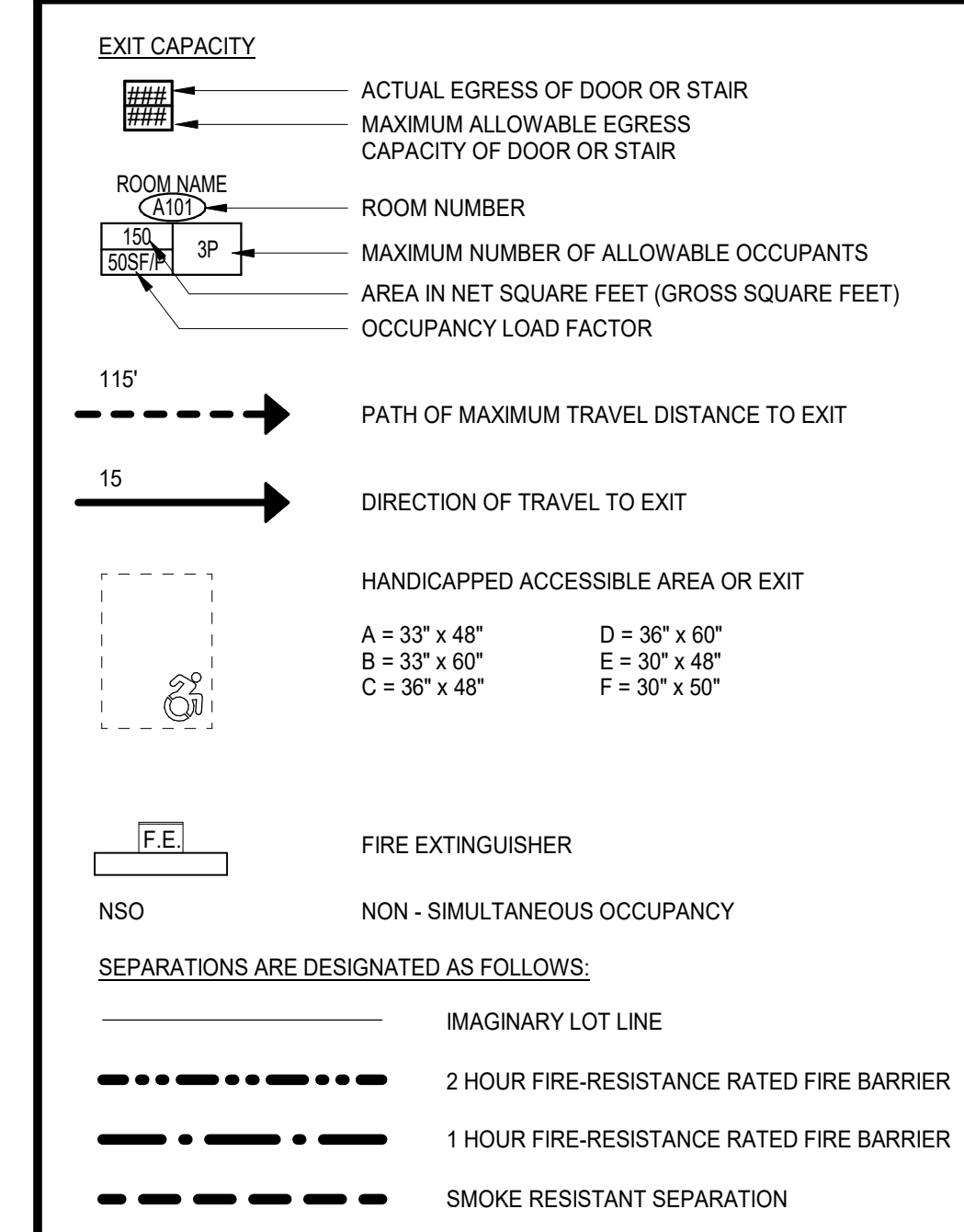
PROJECT NO.: 21012.02 DRAWN BY: YM

**CODE PLAN -
BASEMENT & FIRST
LEVEL**

DRAWING NO.:
R1.01

2021 © COPYRIGHT KAESTLE BOOS ASSOC., INC.

CODE PLAN LEGEND



GENERAL NOTES

- FOR SPECIFIC WALL DESIGNATIONS AND RATED DESIGNS SEE R0.01 AND A1.00 SERIES.
- OCCUPANT LOAD AS ASSEMBLY (7 S.F./NET) UNLESS OTHERWISE NOTED REFER TO CODE PLAN.

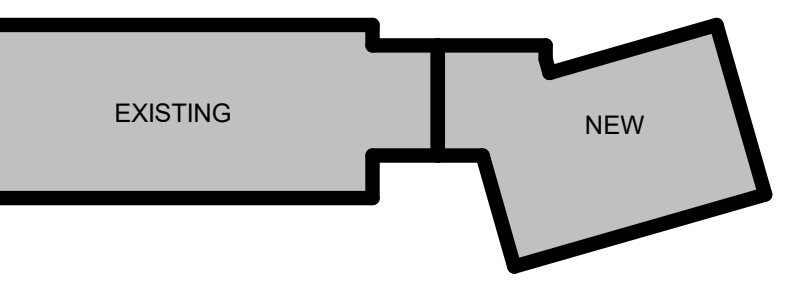
CODE PLAN NOTES NEW & EXISTING CONSTRUCTION

- A. ALL SPACES, FACILITIES AND PROGRAMS REQUIRED BY CODE TO BE ACCESSIBLE TO PHYSICALLY DISABLED PERSONS SHALL BE ACCESSIBLE.
- WHERE A WORKSTATION IS PROVIDED, AN ACCESSIBLE WORKSTATION IS REQUIRED.
 - WHERE A SINK IS PROVIDED, AN ACCESSIBLE SINK WITH PIPE PROTECTION IS REQUIRED.
 - ALL LABS AND SHOPS SHALL HAVE AN ACCESSIBLE EYE AND BODY WASH.
 - ALL ACCESSORIES SHALL MEET REACH RANGES FOR FRONT OR SIDE APPROACH.
 - ALL ACCESSIBLE ROUTES THROUGH BUILDING SHALL PROVIDE A MINIMUM 32 INCHES CLEARANCE (DOORWAYS IN
 - ALL ACCESSIBLE SPACES, FURNISHING FIXTURES AND EQUIPMENT, AND ALL OPERATIONAL AND ACCESSIBLE ROUTE CLEARANCES SHALL MEET REQUIREMENTS OF SECTION 504, REHABILITATION ACT 1973 INCLUDING UNIFORM FEDERAL ACCESSIBILITY STANDARDS (UFAS) AND 504 REGULATIONS, ICC/ANSI A117.1 - 2003, AND THE AMERICANS WITH DISABILITIES ACT, TITLE II, INCLUDING THE AMERICANS WITH DISABILITIES ACT ACCESSIBILITY GUIDELINES (ADAAG) AND ADA REGULATIONS. REFER TO R0.02 FOR MOUNTING HEIGHTS FOR ACCESSIBLE FIXTURES.
- B. NEW AND EXISTING SMOKE PARTITIONS, INCLUDING STORAGE ROOMS OVER 100 SQUARE FEET, SHALL HAVE PENETRATIONS AND VOIDS FIRESTOPPED IN ACCORDANCE WITH DIVISION 07 SPECIFICATION SECTION "PENETRATION FIRESTOPPING". ALL HEAD-OF-WALL JOINTS AND FLOOR-TO-WALL JOINTS AT NEW AND EXISTING SMOKE RESISTANT PARTITIONS SHALL BE SEALED IN ACCORDANCE WITH DIVISION 07 SPECIFICATION SECTION "FIRE-RESISTIVE JOINT SYSTEMS".
- C. NEW AND EXISTING FIRE-RESISTANCE RATED WALLS SHALL HAVE PENETRATIONS AND VOIDS FIRESTOPPED IN ACCORDANCE WITH DIVISION 07 SPECIFICATION SECTION "FIRE-RESISTIVE JOINT SYSTEMS". ALL HEAD-OF-WALL JOINTS AND FLOOR-TO-WALL JOINTS AT NEW AND EXISTING FIRE-RATED WALLS SHALL BE SEALED IN ACCORDANCE WITH DIVISION 07 SPECIFICATION SECTION "FIRE-RESISTIVE JOINT SYSTEMS".
- D. ALL PENETRATIONS THROUGH FLOORS, INCLUDING FLOOR OF DUCTWORK ENCLOSURES, SHALL BE FIRESTOPPED IN ACCORDANCE WITH DIVISION 07 SECTION "PENETRATION FIRESTOPPING". PENETRATIONS THROUGH FLOORS OF RATED ROOMS OR FLOOR SYSTEMS SHALL BE FIRESTOPPED TO MEET RATINGS OF ROOM OR FLOOR SYSTEM.

ISSUE DATE	
DATE	DESCRIPTION
JUNE 13, 2022	ISSUED FOR BID

REVISIONS	
DATE	DESCRIPTION

FOR ALL ABBREVIATIONS, SYMBOL LEGENDS, AND GENERAL NOTES SEE SHEET R0.01



KEY PLAN

SCALE: AS NOTED PROJECT TRUE



**ACHIEVEMENT
FIRST ILUMINAR
SCHOOL ADDITION**

85 GARFIELD AVE,
CRANSTON, RI 02920

PROJECT NO.: 21012.02 DRAWN BY: JPM

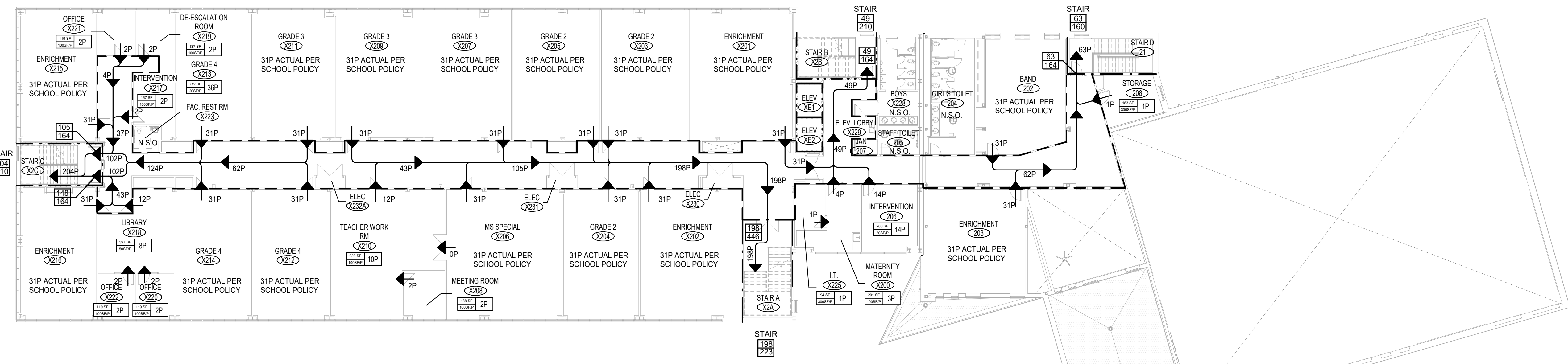
**CODE PLAN -
SECOND & THIRD
LEVEL**

DRAWING NO.:
R1.02

STAIR C CAPACITY
637.3 = 210P
FROM SECOND LEVEL
210P > 204P

STAIR B CAPACITY
637.3 = 210P
FROM SECOND LEVEL
210P > 49P

STAIR D CAPACITY
487.3 = 160P
FROM SECOND LEVEL
160P > 63P

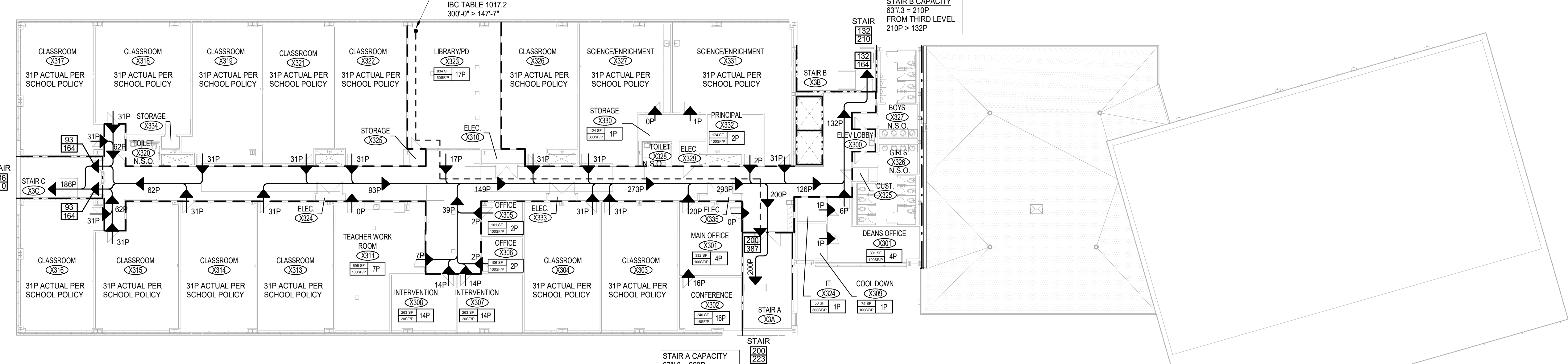


1 SECOND LEVEL CODE PLAN
1/16" = 1'-0"

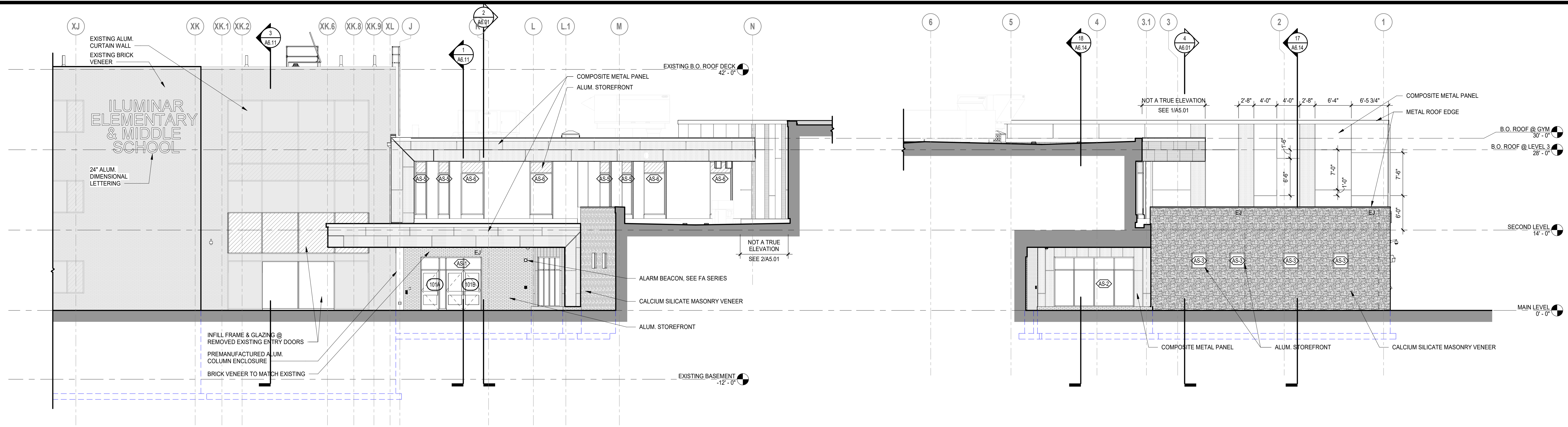
STAIR C CAPACITY
637.3 = 210P
FROM THIRD LEVEL
210P > 186P

MAXIMUM LENGTH OF EXIT TRAVEL = 300' PER IBC TABLE 1017.2
300'-0" > 147'-7"

STAIR B CAPACITY
637.3 = 210P
FROM THIRD LEVEL
210P > 132P

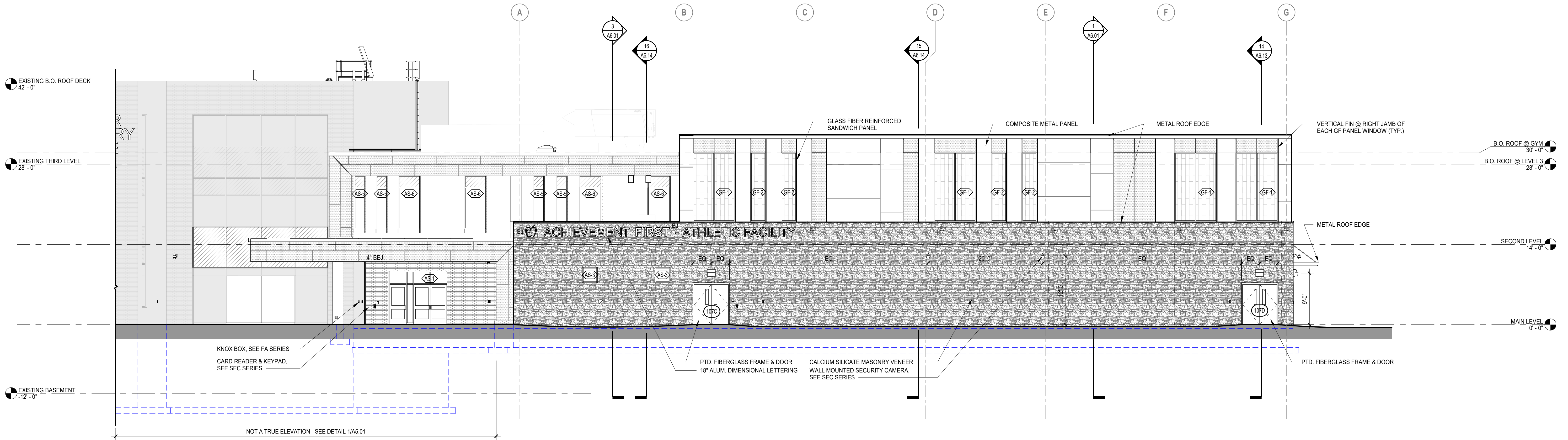


2 THIRD LEVEL CODE PLAN
1/16" = 1'-0"



1 EAST ELEVATION - MAIN ENTRY
1/8" = 1'-0"

2 SOUTH ELEVATION - LOCKER ROOMS
1/8" = 1'-0"

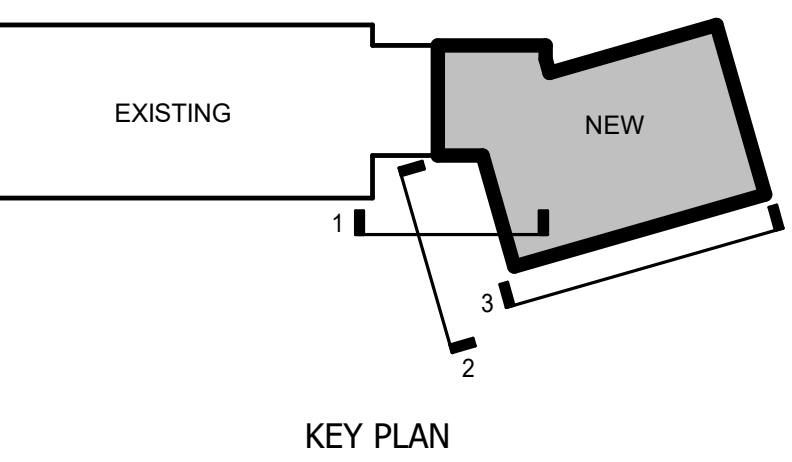


3 EAST ELEVATION - GYMNASIUM
1/8" = 1'-0"

ISSUE DATE	
DATE	DESCRIPTION
JUNE 13, 2022	ISSUED FOR BID

REVISIONS	
DATE	DESCRIPTION

FOR ALL ABBREVIATIONS, SYMBOL LEGENDS, AND GENERAL NOTES SEE SHEET R0.01



KEY PLAN
SCALE: 1/8" = 1'-0" PROJECT TRUE

SYMBOLS LEGEND	
	FIRE DEPARTMENT CONNECTION
	OVERFLOW ROOF DRAIN SPOUT
	WALL PACK LIGHT SEE ELECTRICAL DWG'S
	SECURITY CAMERA SEE SECURITY DWG'S
	WALL HYDRANT, SEE PLUMBING DWG'S
	PREFORMED BUILDING EXPANSION JOINT
	MASONRY EXPANSION JOINT
	FRAME TYPE TAG - SEE A8 SERIES
	GLAZING TYPE 1 - TEMPERED GLASS
	GLAZING TYPE 2 - SPANDREL GLASS
	GLAZING TYPE 3 - GF SANDWICH PANEL
	FACE BRICK
	CALCIUM SILICATE
	METAL PANEL - WHITE
	METAL PANEL - ORANGE
NOTES:	
1. BRICK EXPANSION JOINTS TO OCCUR AT: - 25'-0" OC (MAX) AT WALLS WITH NO OPENINGS - 20'-0" OC (MAX) AT WALLS WITH MULTIPLE OPENINGS - 2'-0" FROM ALL OUTSIDE CORNERS (U.O.N.) - ALL INSIDE CORNERS	

**ACHIEVEMENT
FIRST ILLUMINAR
SCHOOL ADDITION**

85 GARFIELD AVE,
CRANSTON, RI 02920

PROJECT NO.: 21012.02 DRAWN BY: JPM

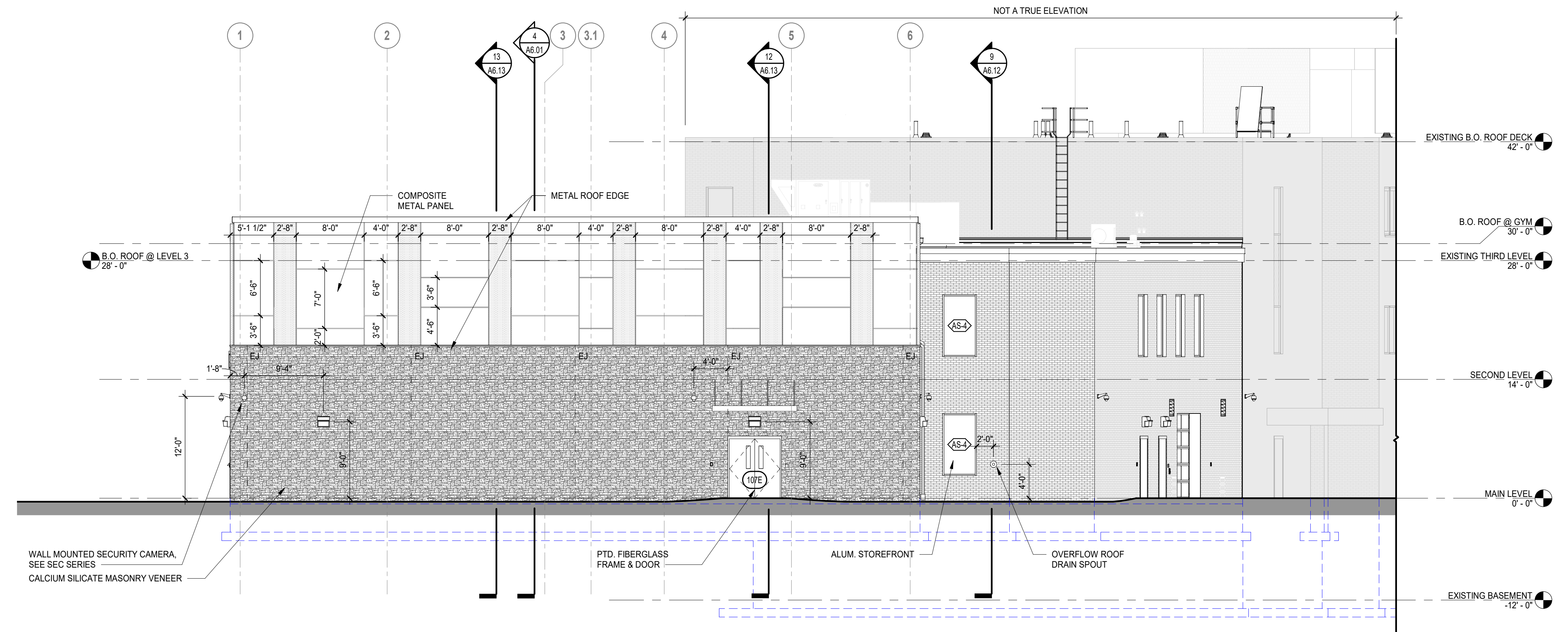
**EXTERIOR
ELEVATIONS -
EAST & SOUTH**

DRAWING NO.:
A5.01

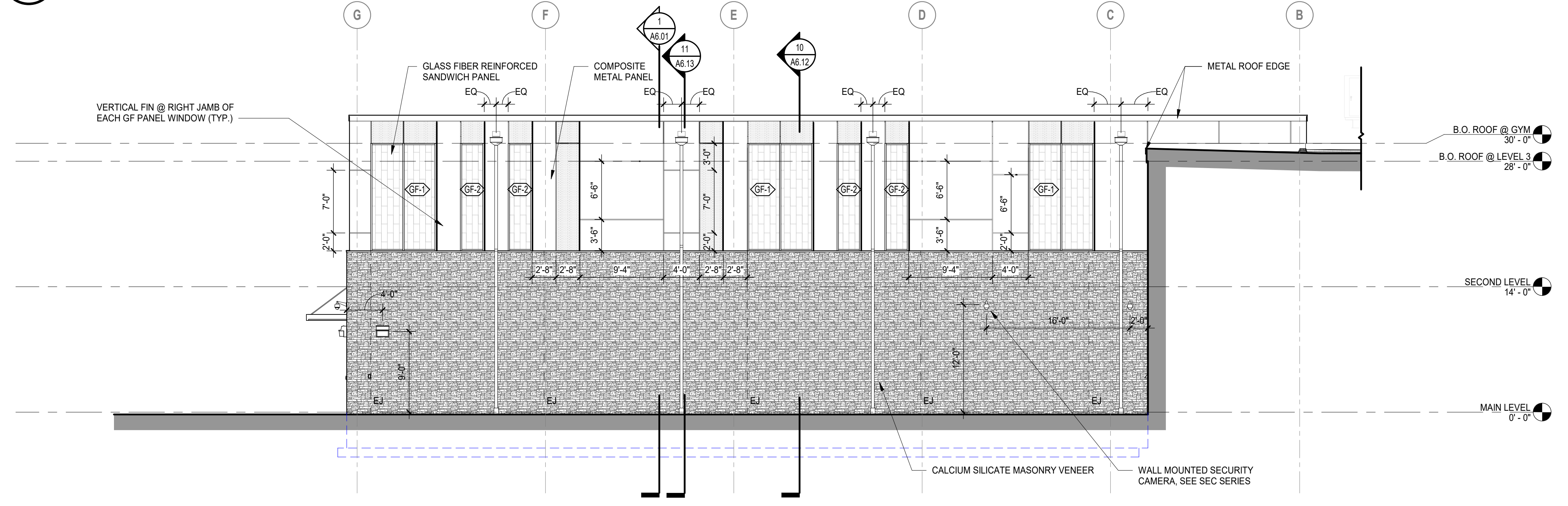
SYMBOLS LEGEND

	FIRE DEPARTMENT CONNECTION
	OVERFLOW ROOF DRAIN SPOUT
	WALL PACK LIGHT SEE ELECTRICAL DWGS
	SECURITY CAMERA SEE SECURITY DWGS
	WALL HYDRANT, SEE PLUMBING DWGS
	PREFORMED BUILDING EXPANSION JOINT
	MASONRY EXPANSION JOINT
	FRAME TYPE TAG - SEE A8 SERIES
	GLAZING TYPE 1 - TEMPERED GLASS
	GLAZING TYPE 2 - SPANDREL GLASS
	GLAZING TYPE 3 - GF SANDWICH PANEL
	FACE BRICK
	CALCIUM SILICATE
	METAL PANEL - WHITE
	METAL PANEL - ORANGE

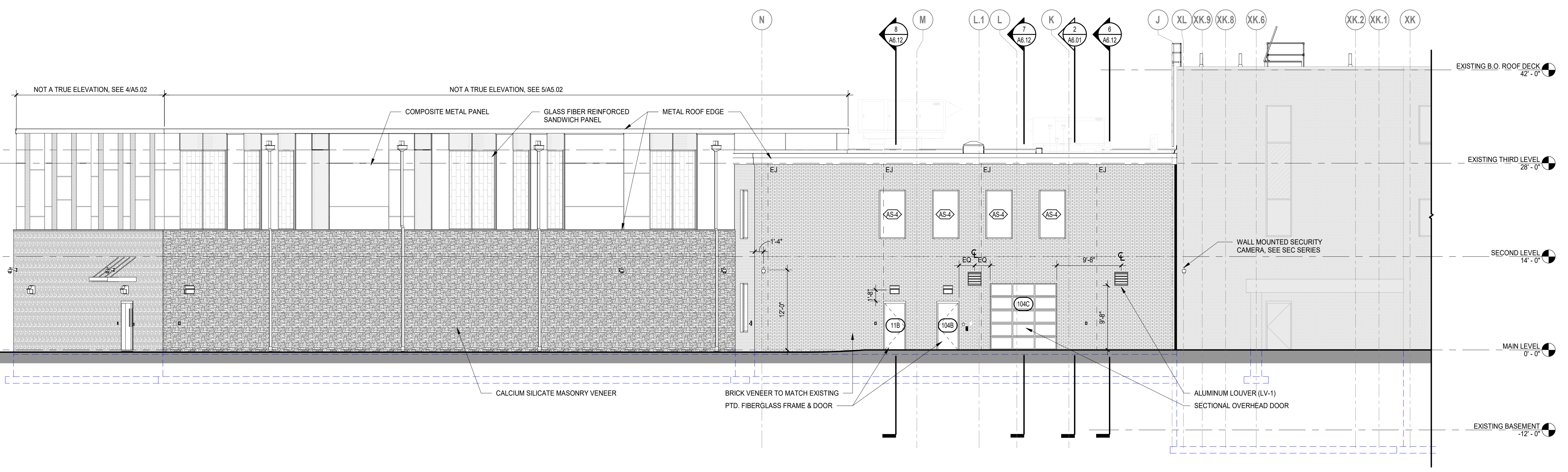
NOTES:
 1. BRICK EXPANSION JOINTS TO OCCUR AT:
 - 20'-0" OC (MAX) AT WALLS WITH NO OPENINGS
 - 30'-0" OC (MAX) AT WALLS WITH MULTIPLE OPENINGS
 - 2'-0" FROM ALL OUTSIDE CORNERS (U.O.N.)
 - ALL INSIDE CORNERS



4 NORTH ELEVATION - GYMNASIUM
 1/8" = 1'-0"



5 WEST ELEVATION - GYMNASIUM
 1/8" = 1'-0"

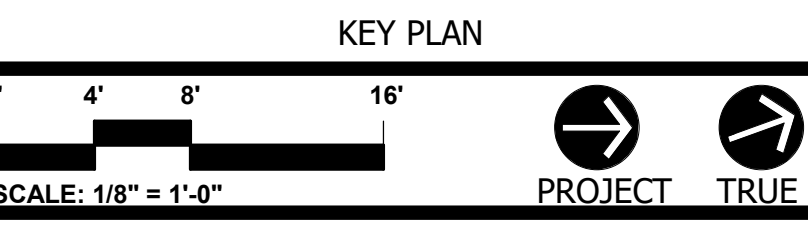
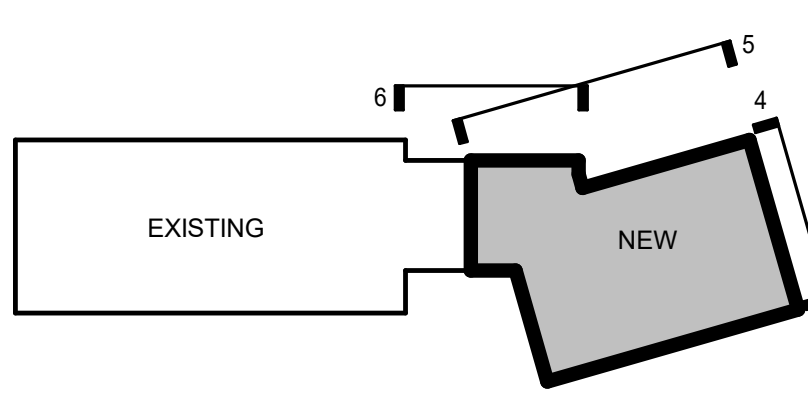


6 WEST ELEVATION - LOADING DOCK
 1/8" = 1'-0"

ISSUE DATE	
DATE	DESCRIPTION
JUNE 13, 2022	ISSUED FOR BID

REVISIONS	
DATE	DESCRIPTION

FOR ALL ABBREVIATIONS, SYMBOL LEGENDS, AND GENERAL NOTES SEE SHEET R0.01



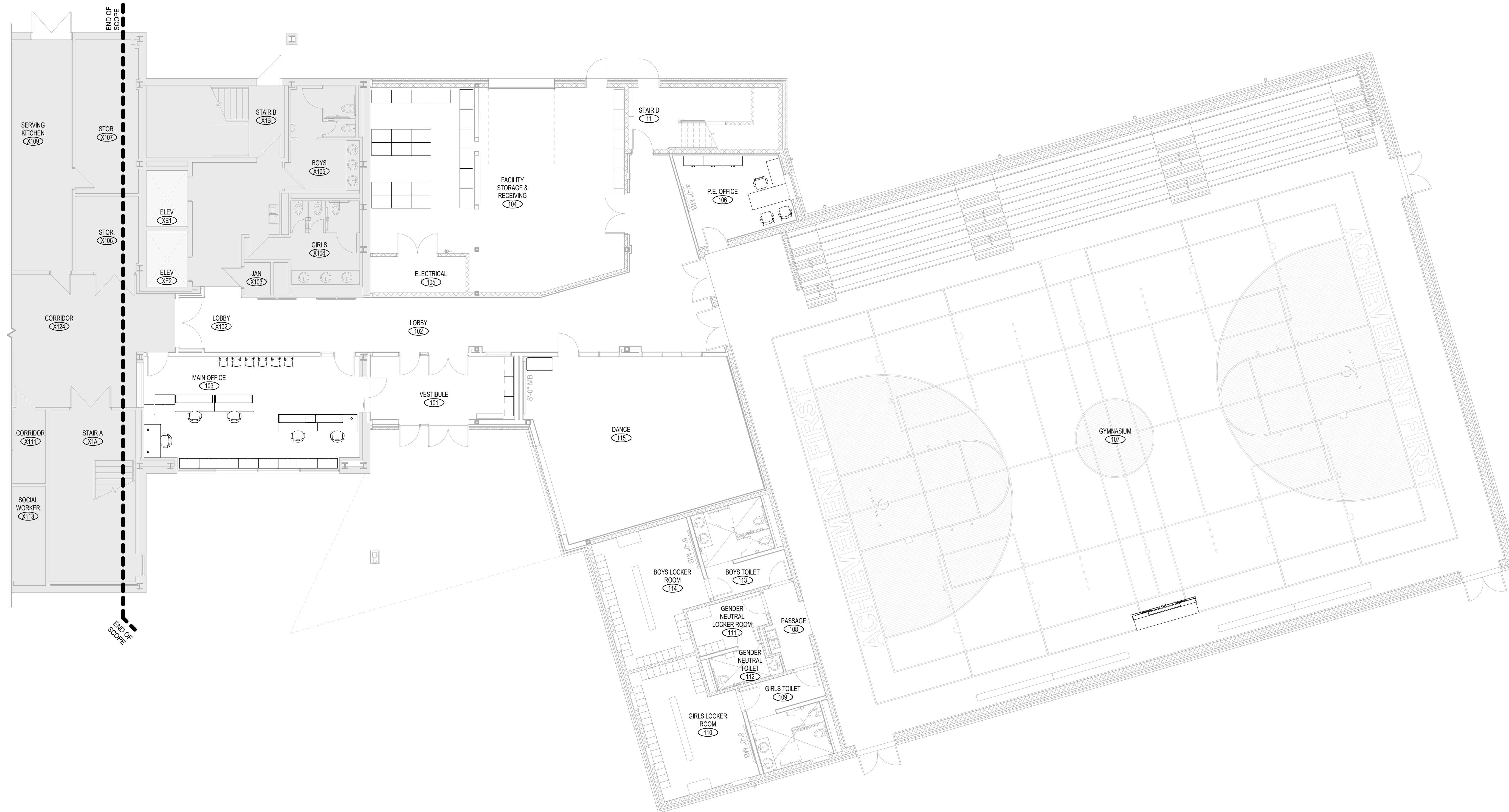
**ACHIEVEMENT
 FIRST ILLUMINAR
 SCHOOL ADDITION**

**85 GARFIELD AVE,
 CRANSTON, RI 02920**

PROJECT NO.: 21012.02 DRAWN BY: JPM

**EXTERIOR
 ELEVATIONS -
 NORTH & WEST**

DRAWING NO.:
A5.02



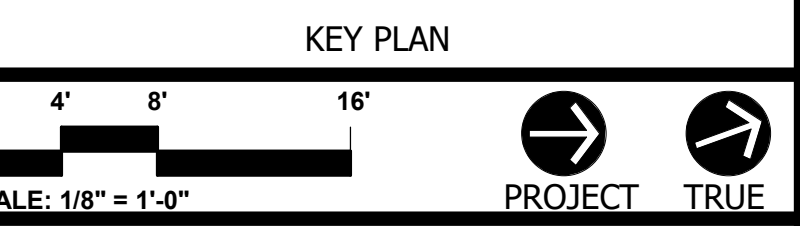
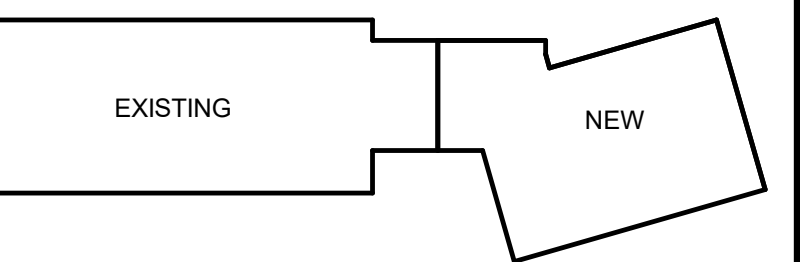
1 MAIN LEVEL - FURNITURE PLAN
1/8" = 1'-0"

NOTE: FURNITURE SHOWN FOR COORDINATION PURPOSES ONLY, NOT IN CONTRACT

ISSUE DATE	
DATE	DESCRIPTION
JUNE 13, 2022	ISSUED FOR BID

REVISIONS	
DATE	DESCRIPTION

FOR ALL ABBREVIATIONS, SYMBOL LEGENDS, AND GENERAL NOTES SEE SHEET R0.01



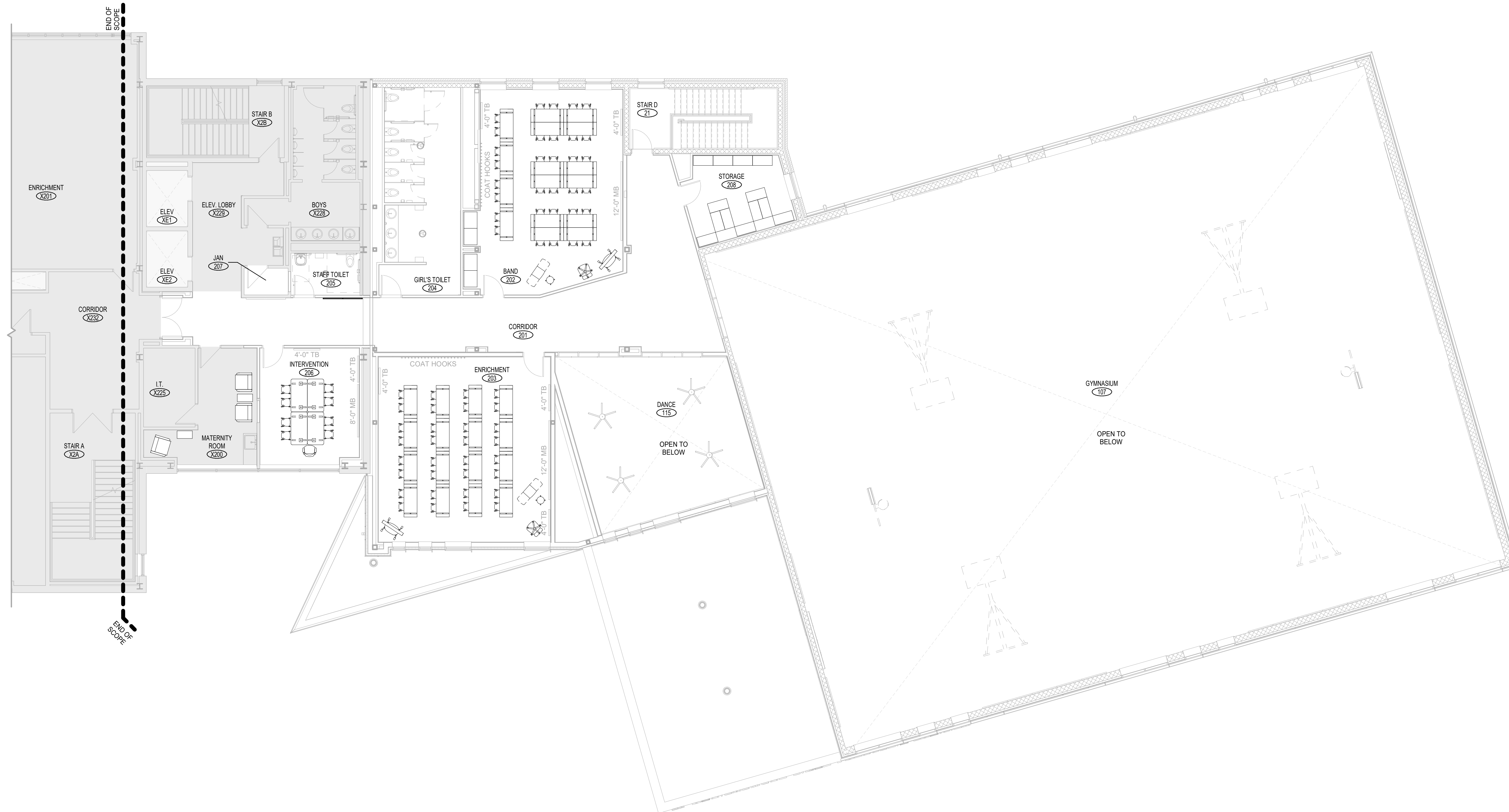
**ACHIEVEMENT
FIRST ILLUMINAR
SCHOOL ADDITION**

85 GARFIELD AVE,
CRANSTON, RI 02920

PROJECT NO.: 21012.02 DRAWN BY: J.L.W. CB

**MAIN LEVEL -
FURNITURE PLAN**

DRAWING NO.:
A13.01



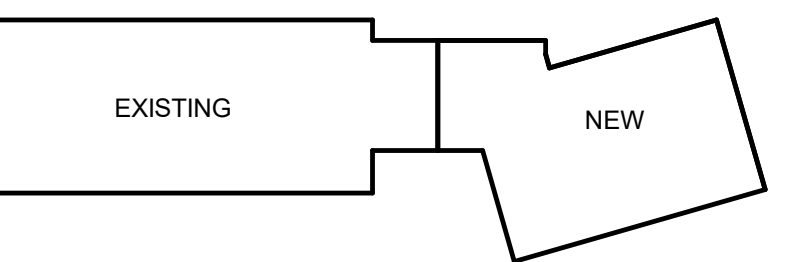
ISSUE DATE

DATE	DESCRIPTION
JUNE 13, 2022	ISSUED FOR BID

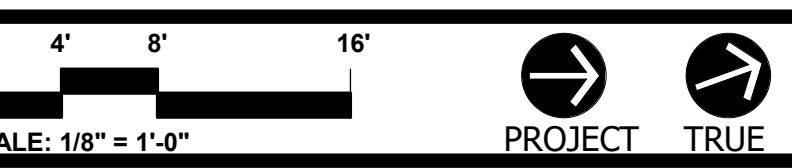
REVISIONS

DATE	DESCRIPTION
------	-------------

FOR ALL ABBREVIATIONS, SYMBOL LEGENDS, AND GENERAL NOTES SEE SHEET R0.01



KEY PLAN



**ACHIEVEMENT
FIRST ILLUMINAR
SCHOOL ADDITION**

85 GARFIELD AVE,
CRANSTON, RI 02920

PROJECT NO.: 21012.02 DRAWN BY: J.L.W. CB

**SECOND LEVEL -
FURNITURE PLAN**

DRAWING NO.:

A13.02

NOTE: FURNITURE SHOWN FOR
COORDINATION PURPOSES
ONLY. NOT IN CONTRACT

1 SECOND LEVEL - FURNITURE PLAN
1/8" = 1'-0"